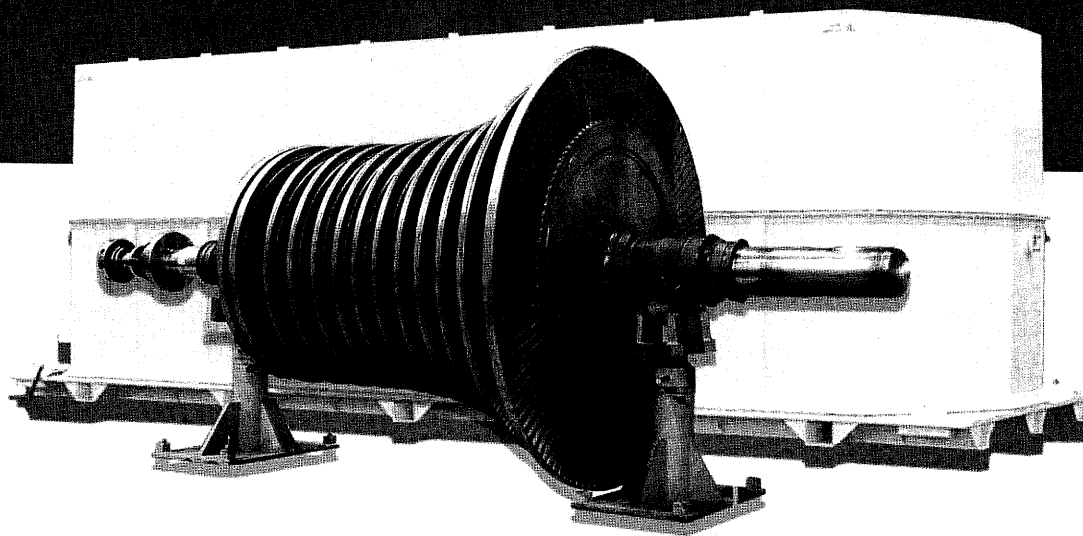


*Can you afford not to protect
your investment?*

**EASTERN
ALLOY INC.**

Specializing in
Turbomachinery Canisters



info@easternalloy.com

Fax: 724-379-3540

Phone: 724-379-5776

Donora, PA 15033-1131

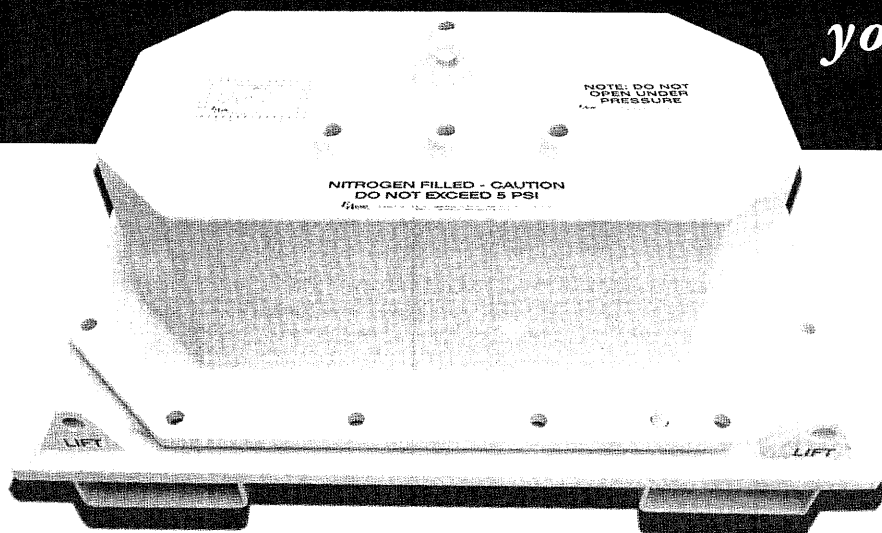
1138 Meldon Avenue

P.O. Box 261

Eastern Alloy, Inc.

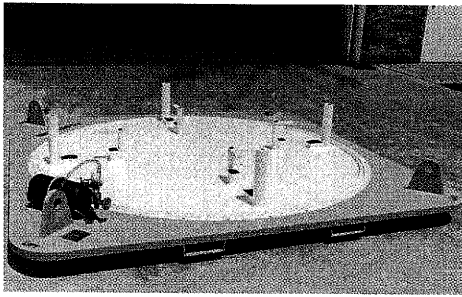
**EASTERN
ALLOY INC.**

*Add insurance and peace of mind when storing or shipping
your valuable equipment.*

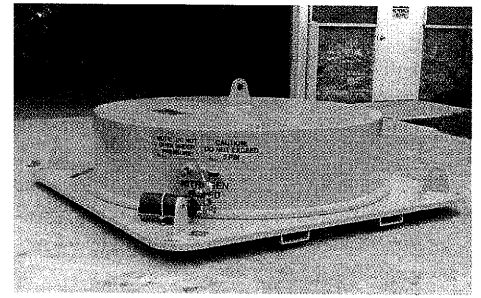


**EASTERN
ALLOY INC.**

Specializing in
Turbomachinery Canisters

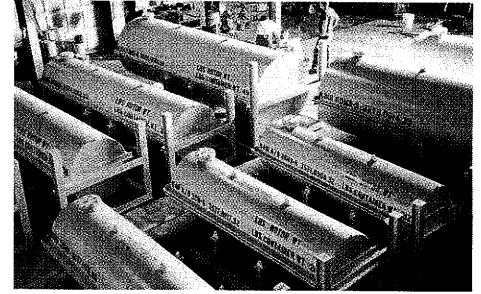
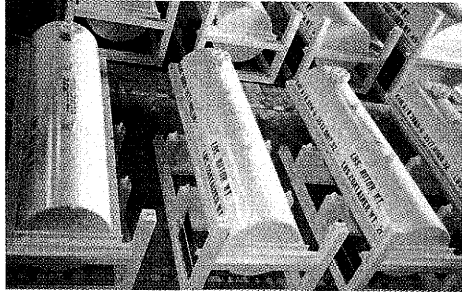


This type of canister was fabricated to store, support and protect single impellers for turbomachinery companies.



Custom Designed Canisters

These canisters were flanged and linked in series for a dry air system and were used in transporting rotors between England and the Netherlands for a major overseas turbomachinery company.



Since 1989, Eastern Alloy Inc. has been designing and producing all types and sizes of metal canisters for total protection and support of turbine and compressor rotors and other critical parts in shipping and storage. The metal storage canister shell is of 1/4" thick material and the frame is fabricated from structural steel. This design enables the canister to be stored either vertically or horizontally. Each canister is custom designed to accept the size and weight of the individual rotors.

All canisters have provisions for nitrogen purge, vents and drains. A 5/8" diameter "O" ring is used to insure a tight seal. Each one is fitted with internal clamps or cradles lined with urethane and rubber. The external and internal surface coatings are a corrosive resistant polyurethane and epoxy. Other coatings are available per customer specifications.

Eastern Alloy's welders are certified to ASME Section IX and to AWS D1-1 Structural Steel Welding Code. We work with carbon and low alloy steels, various stainless steel grades, as well as the strongest high nickel alloys. One trademark of our service is consistency. We repeatedly meet customer contract schedules and deadlines. Eastern Alloy's staff is also available on an emergency basis for your special needs.

Our modern up-to-date equipment and skilled shop personnel assure our customers the best possible quality of work. Our shop is equipped with a ten (10) capacity overhead crane which enables us to maintain a smooth flow of production from raw material in inventory through the finishing process.

